

stay



You'll find accommodation to suit every taste in Hay and the beautiful surrounding countryside. Bed and breakfast, self-catering, camping or glamping – the choice is yours! Stay in the historic town itself, or choose from a range of secluded country locations.

The Old Black Lion

Lion Street, Hay-on-Wye HR3 5AD

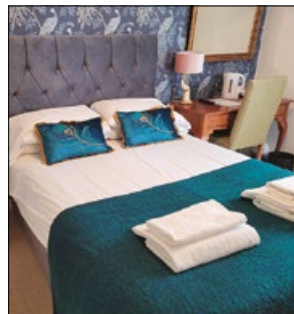
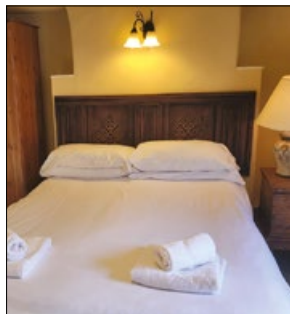
1



Old world charm with modern facilities and great service awaits you in our 17th Century Inn.

10 individually styled rooms, in the heart of Hay-on-Wye.

Perfectly situated for walking and cycling activities, we provide a hearty breakfast and delicious lunch/dinner.



Enjoy dining in our AA Rosette winning restaurant surrounded by oak beams and log burning stoves or outside in our patio and marquee areas. We pride ourselves on ensuring a memorable, relaxed dining experience and stay.

oldblacklionhayonwye

theoldblacklion_hayonwye

www.oldblacklion.co.uk

info@oldblacklion.co.uk

Lunch 12pm-2pm

Dinner 6pm-9.15pm



From £86 (Single) £131 Double

Tel 01497 820841



6(D)2(T)2(S)



2

Griffin Inn

Llyswn, Brecon, Nr Hay-on-Wye LD3 0UR



A 15th century country inn with a bar, restaurant and en-suite rooms, on-site parking. The Griffin serves highly rated fresh home-cooked food from 12-2pm and 6-9pm daily. Our menu is accompanied by our daily specials board, which caters for all diets.

Percy Haynes

www.thegriffinllyswn.com

info@thegriffinllyswn.com

t 01874 754542

From £60

1(F)5(D)1(T)



3

The Swan at Hay

Church Street, Hay-on-Wye HR3 5DQ



Accommodation / Food / Weddings.

A grade 2 listed building with its own walled garden in the centre of Hay-on-Wye.

Luxury Accommodation with top quality dining.

We're able to cater for events both large and small.

www.swanathay.co.uk

stay@swanathay.co.uk

t 01497 821188

From £130

10(K)9(D)1(S)



Baskerville Hall Hotel

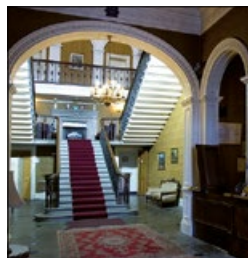
Clyro Court, Clyro, Hay-on-Wye, HR3 5LE



Set in 130 acres of Welsh countryside, Baskerville Hall was built in 1839 by Thomas Baskerville.

28 en-suite rooms ranging from executive style to budget.
Dormitory wing for groups £35 pppn.
Camping £12 pppn.

Magnificent views of Black Mountains and Brecon Beacons.
Indoor heated swimming pool and sauna.
Quiet midweek retreat.



t 01497 820033 **w** www.baskervillehall.co.uk

Enquiries to: info@baskervillehall.co.uk

BB £35-£150 5(F)16(D)8(T)

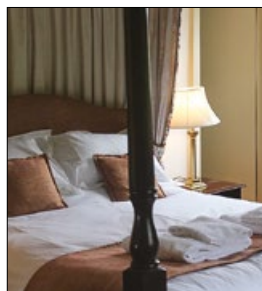
Single occupancy available



The Rhydspence Inn

Whitney on Wye, Hereford HR3 6EU

A former 14th century drovers' inn, The Rhydspence Inn offers you fresh seasonal food, fine wines, local ales and exceptional accommodation.



With 7 beautiful en-suite bedrooms looking over the Wye valley, perfectly situated for walking Offa's Dyke and a short drive to Hay-on-Wye.

t 01497 831262

www.rhydspenceinn.co.uk

info@rhydspenceinn.co.uk

BB From £100 6(D)1(T)





The Dinas Castle Inn

Pengenffordd

www.dinascastleinn.co.uk

01874 711353

Pub - Restaurant

Bunkhouse and B&B

Accommodation available





Castell Y Gelli
Hay Castle

History, arts, culture, food and more...

Open Every Day



HAY *Music*

presents

Classical, Contemporary and Early Music

All ages, families and individuals
will find a warm welcome at our
monthly concerts in Hay-on-Wye.

Visit our website for more information about our concerts
and to buy tickets. Tickets are also available at the
Hay Tourist Information Bureau.

Email us at music@haymusic.org to join our mailig list
or follow us on our social media channels.



www.haymusic.org



HowTheLightGetsIn

HAY 2025

THE WORLD'S LARGEST IDEAS & MUSIC FESTIVAL



Up to
50%
LOCALS DISCOUNT
available at
THE GLOBE

HAY-ON-WYE

23RD-26TH MAY

Hidden delights, moments from Hay

Step over the border to uncover
fantastic places to stay, foodie pubs,
wild walks, captivating castles and
charming market towns.



VISIT **HEREFORDSHIRE**

Plan your visit:
www.visitherefordshire.co.uk



BOOKTOWN TAXI

HAY-ON-WYE



Taxi

07881 726547

MINIBUS HIRE

HERDMAN COACHES LTD

Minibuses 16-33 Seats
Coaches up to 53 Seats



 **HAY-ON-WYE**
01497 847100

HAYTAXIBUS

Taxis & minibuses

Airport transfers, luggage transfers,
canoe & bike transport.

Wheelchair accessible vehicles available.

Dog friendly.

01497 820 444

07974 106 656

info@haytaxibus.co.uk

www.haytaxibus.co.uk



Hay Festival *Hay-on-Wye*

Discover a world
of different
possibilities



Book now
hayfestival.org

Hay Festival Hay-on-Wye
22 May—1 June 2025

Hay Festival Winter Weekend
27—30 November 2025

Hay Festival Hay-on-Wye
21—31 May 2026

